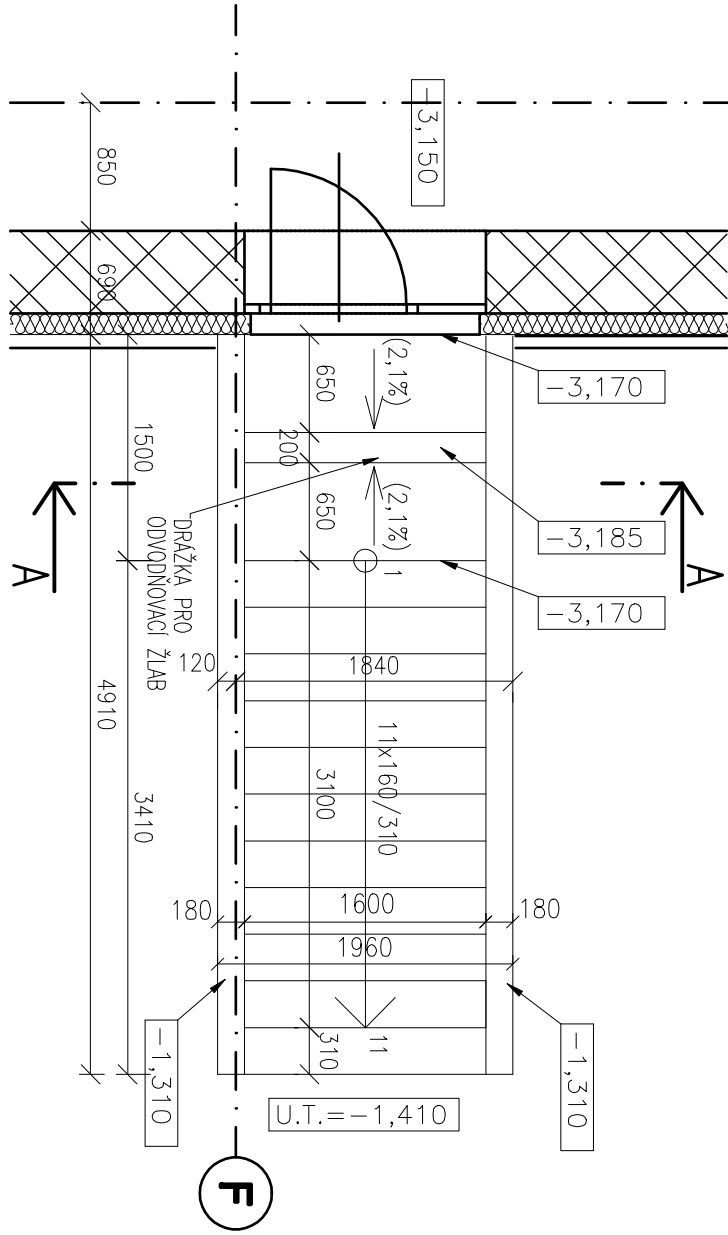
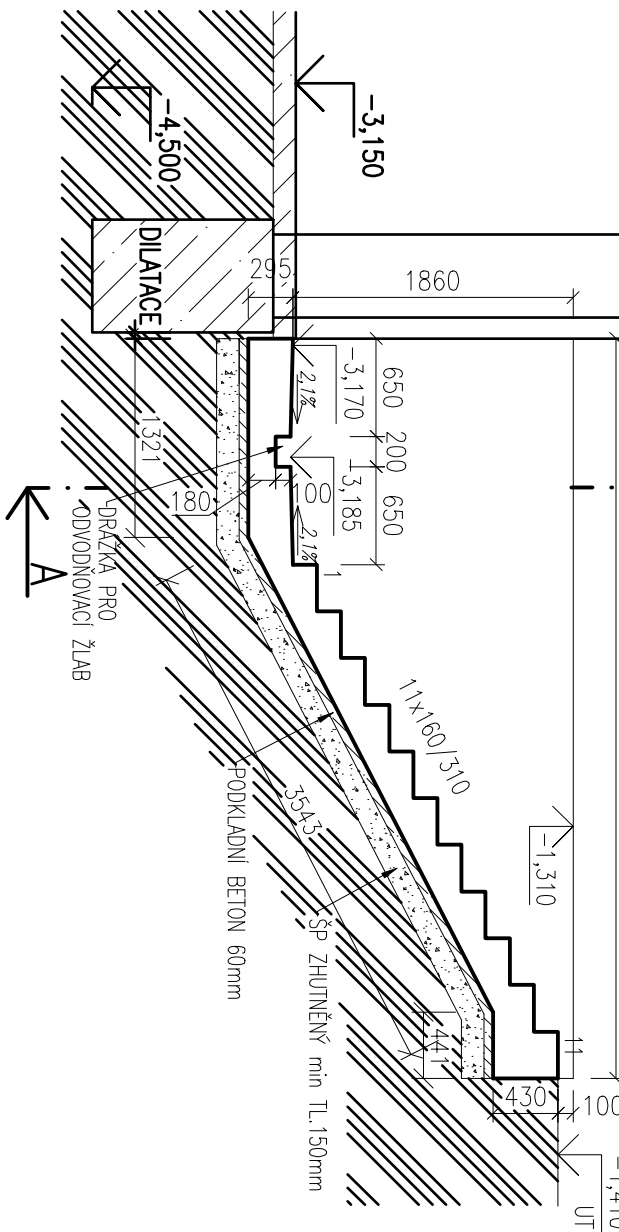


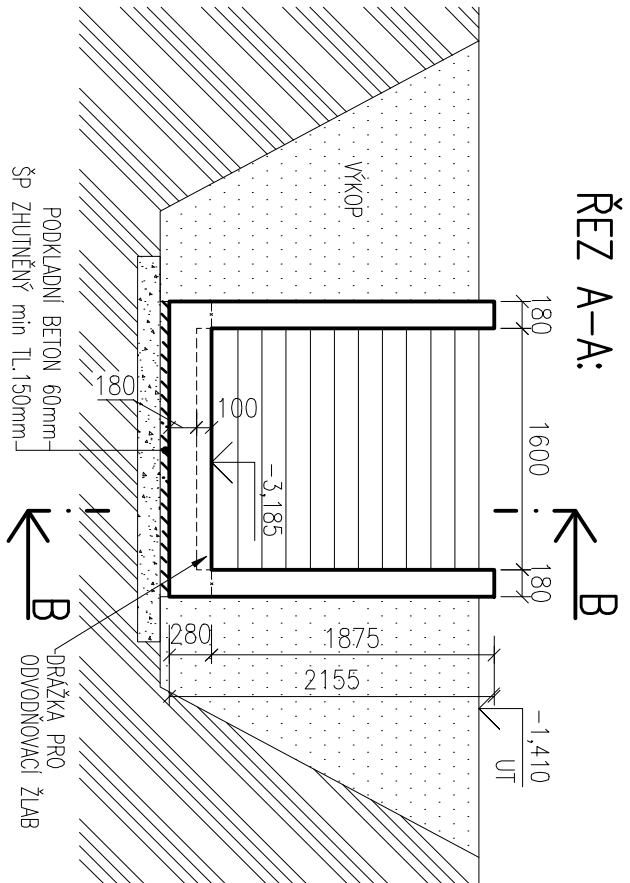
19 PŮDORYS:



ŘEZ B-B:



ŘEZ A-A:



LEGENDA:

- ZEMINA
- ŽELEZOBET. KONSTR.
- BETON

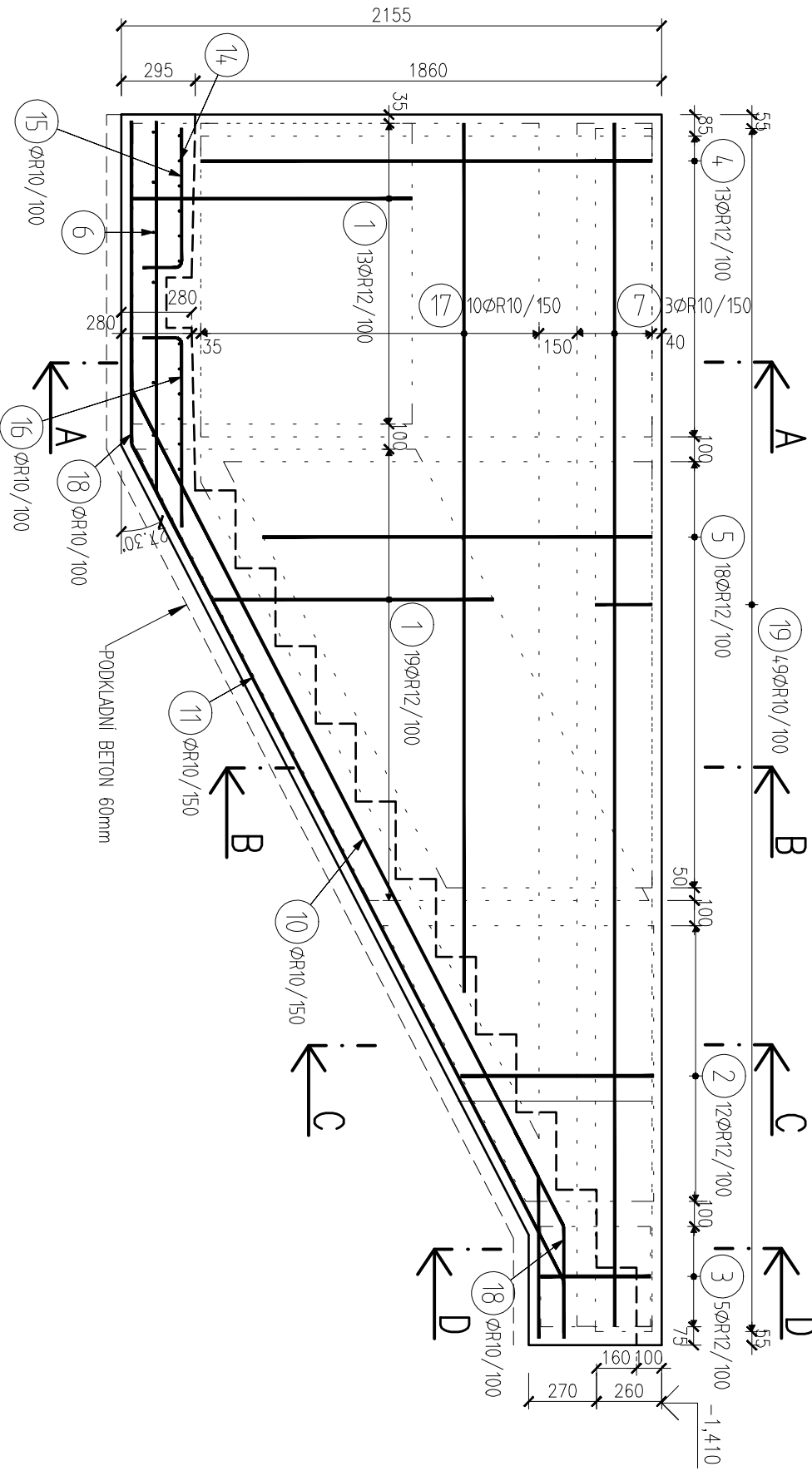
- ŠP ZHUTNĚNÝ
- ZASTPÁNÍ VÝKOPU

POZNAMKA:

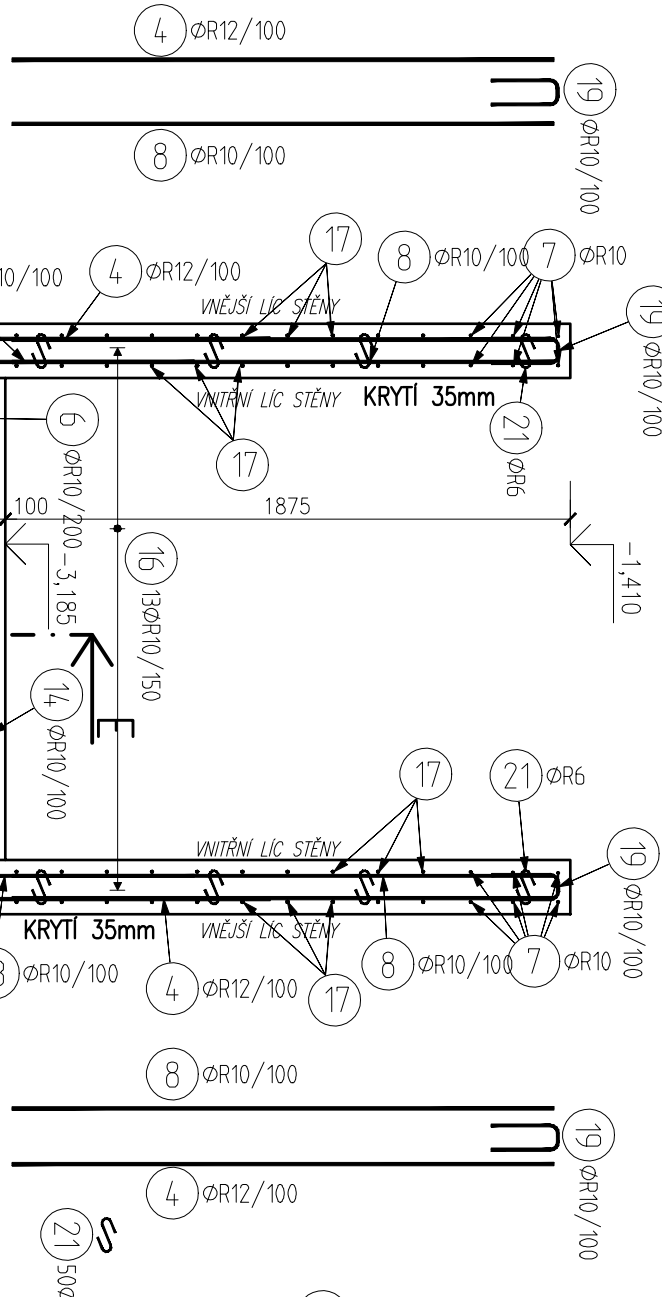
— MÍSTO A OSÁZENÍ ODKRYVU V DRÁŽCE PRO ODPOVÍDAJÍCÍ ŽLAB BŮDE UPŘESNĚNO VE SMĚRNÉ ČÁSTI PROJEKTU

VYZTUŽENÍ VENKOVNÍHO SCHODIŠTĚ M:25

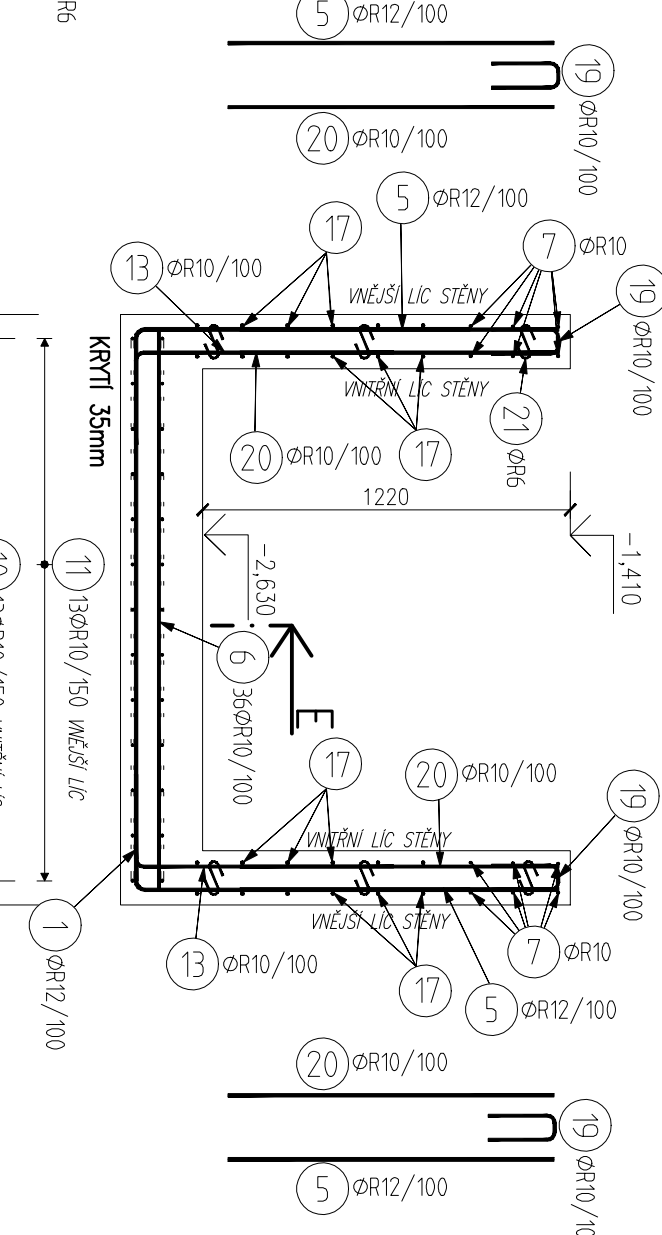
VNĚJŠÍ LÍČ STĚNY:



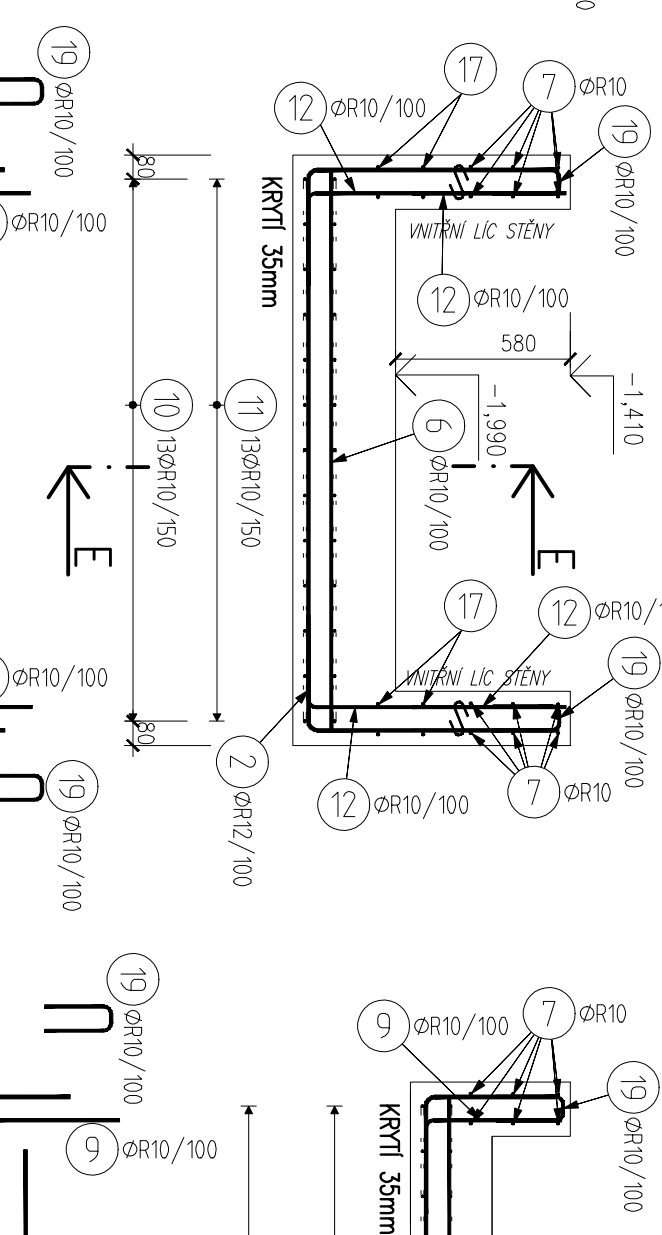
ŘEZ A-A:



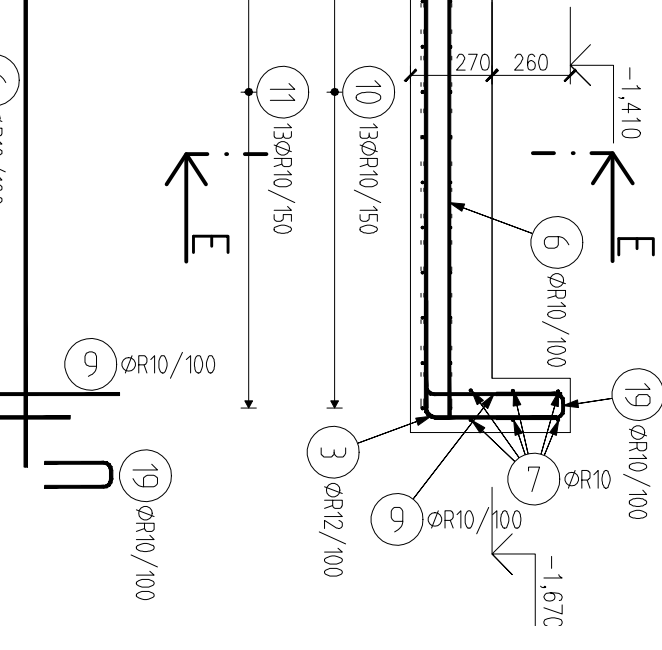
ŘEZ B-B:



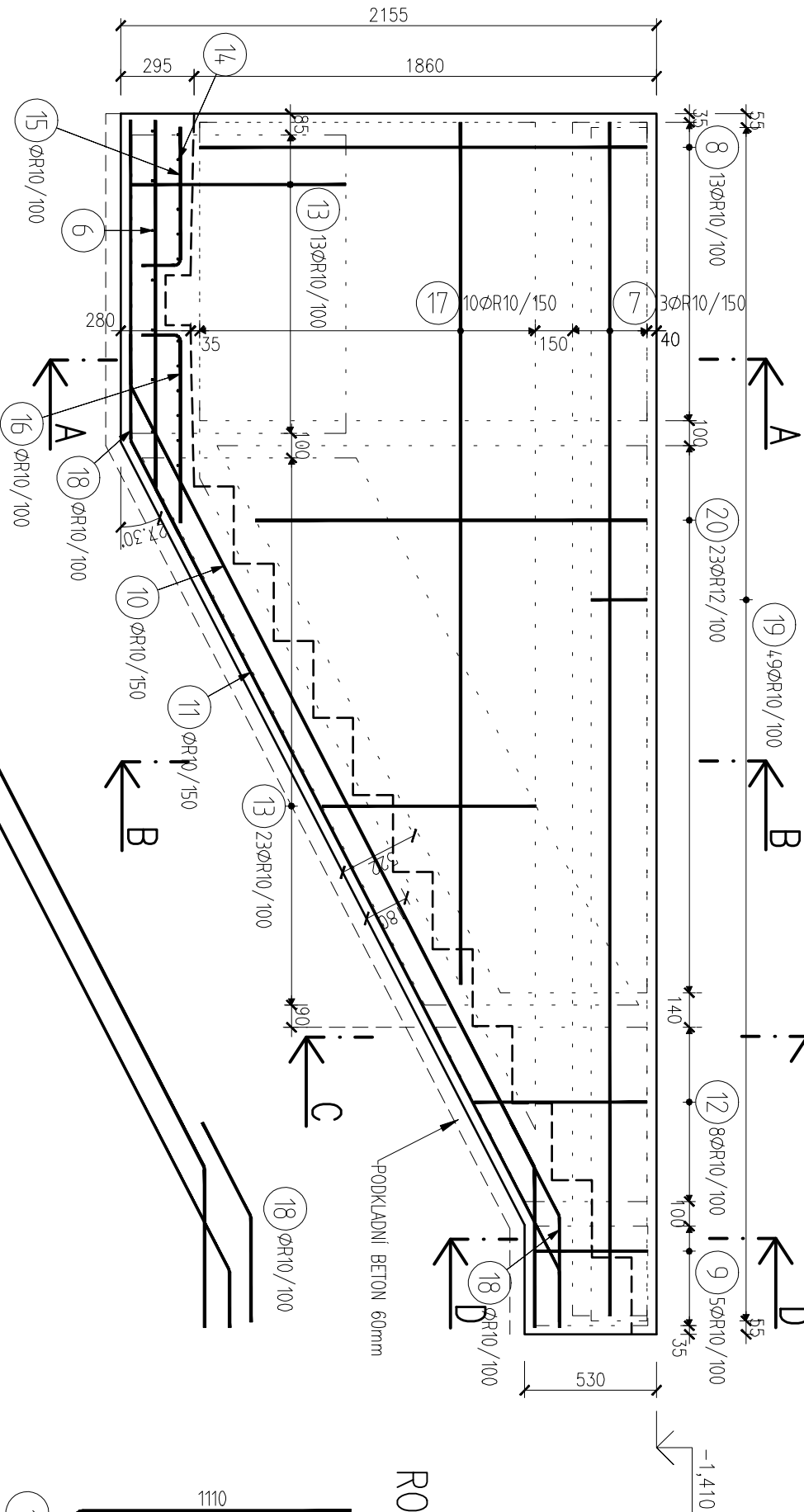
ŘEZ C-C:



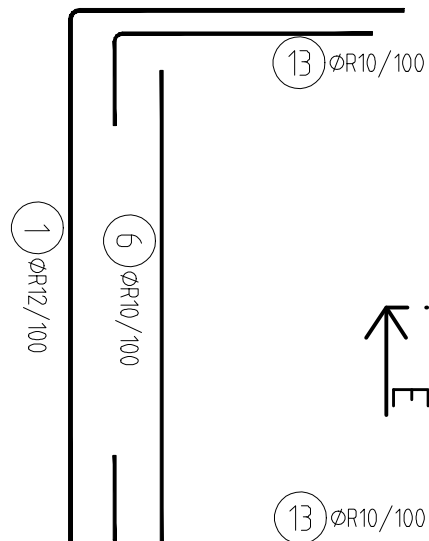
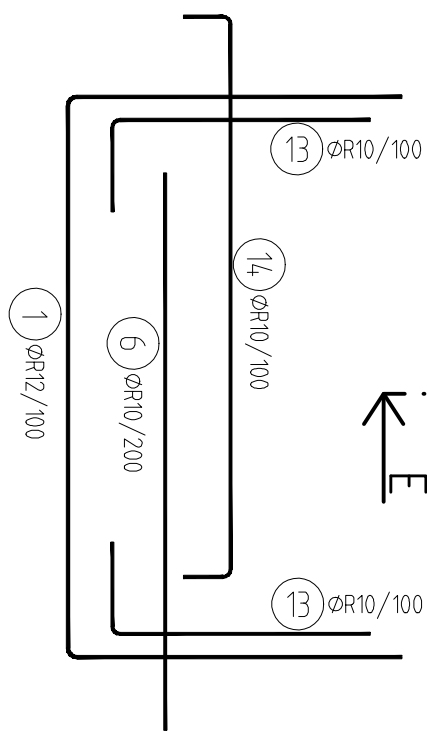
ŘEZ D-D:



VNITŘNÍ LÍČ STĚNY:



ROZKRESLENÍ VÝZTUŽE:



VÝKAZ VÝZTUŽE:

17.001	Ø10/100	1.410
17.002	Ø12/100	1.410
17.003	Ø14/100	1.410
17.004	Ø16/100	1.410
17.005	Ø18/100	1.410
17.006	Ø20/100	1.410
17.007	Ø22/100	1.410
17.008	Ø24/100	1.410
17.009	Ø26/100	1.410
17.010	Ø28/100	1.410
17.011	Ø30/100	1.410
17.012	Ø32/100	1.410
17.013	Ø34/100	1.410
17.014	Ø36/100	1.410
17.015	Ø38/100	1.410
17.016	Ø40/100	1.410
17.017	Ø42/100	1.410
17.018	Ø44/100	1.410
17.019	Ø46/100	1.410
17.020	Ø48/100	1.410
17.021	Ø50/100	1.410

Pol	Profil	De lka [mm]	ks	R
1	R 12	4050	32	129.6
2	R 12	3450	12	41.4
3	R 12	2700	5	13.5
4	R 12	1800	25	46.8
5	R 12	1300	36	46.8
6	R 10	1850	43	79.5
7	R 10	1800	26	46.8
8	R 10	1800	25	7.5
9	R 10	1800	12	68.3
10	R 10	1800	13	68.3
11	R 10	1800	13	16.0
12	R 10	1800	16	82.8
13	R 10	1800	12	25.8
14	R 10	1800	13	9.1
15	R 10	1800	13	11.7
16	R 10	1800	13	110.0
17	R 10	1800	40	22.1
18	R 10	1800	26	49.0
19	R 10	1800	98	55.2
20	R 10	1800	46	55.2
21	R 10	1800	250	55.2

Pol	Profil	De lka [mm]	ks	R
1	R 12	4050	32	129.6
2	R 12	3450	12	41.4
3	R 12	2700	5	13.5
4	R 12	1800	25	46.8
5	R 12	1300	36	46.8
6	R 10	1850	43	79.5
7	R 10	1800	26	46.8
8	R 10	1800	25	7.5
9	R 10	1800	12	68.3
10	R 10	1800	13	68.3
11	R 10	1800	13	16.0
12	R 10	1800	16	82.8
13	R 10	1800	12	25.8
14	R 10	1800	13	9.1
15	R 10	1800	13	11.7
16	R 10	1800	13	110.0
17	R 10	1800	40	22.1
18	R 10	1800	26	49.0
19	R 10	1800	98	55.2
20	R 10	1800	46	55.2
21	R 10	1800	250	55.2

Pol	Profil	De lka [mm]	ks	R
1	R 12	4050	32	129.6
2	R 12	3450	12	41.4
3	R 12	2700	5	13.5
4	R 12	1800	25	46.8
5	R 12	1300	36	46.8
6	R 10	1850	43	79.5
7	R 10	1800	26	46.8
8	R 10	1800	25	7.5
9	R 10	1800	12	68.3
10	R 10	1800	13	68.3
11	R 10	1800	13	16.0
12	R 10	1800	16	82.8
13	R 10	1800	12	25.8
14	R 10	1800	13	9.1
15	R 10	1800	13	11.7
16	R 10	1800	13	110.0
17	R 10	1800	40	22.1
18	R 10	1800	26	49.0
19	R 10	1800	98	55.2
20	R 10	1800	46	55.2
21	R 10	1800	250	55.2

Pol	Profil	De lka [mm]	ks	R
1	R 12	4050	32	129.6
2	R 12	3450	12	41.4
3	R 12	2700	5	13.5
4	R 12	1800	25	46.8
5	R 12	1300	36	46.8
6	R 10	1850	43	79.5
7	R 10	1800	26	46.8
8	R 10	1800	25	7.5
9	R 10	1800	12	68.3
10	R 10	1800	13	68.3
11	R 10	1800	13	16.0
12	R 10	1800	16	82.8
13	R 10	1800	12	25.8
14	R 10	1800	13	9.1
15	R 10	1800	13	11.7
16	R 10	1800	13	110.0
17	R 10	1800	40	22.1
18	R 10	1800	26	49.0
19	R 10	1800	98	55.2
20	R 10	1800	46	55.2
21	R 10	1800	250	55.2

Pol	Profil	De lka [mm]	ks	R
1	R 12	4050	32	129.6
2	R 12	3450	12	41.4
3	R 12	2700	5	13.5
4	R 12	1800	25	46.8
5	R 12	1300	36	46.8
6	R 10	1850	43	79.5
7	R 10	1800	26	46.8
8	R 10	1800	25	7.5
9	R 10	1800	12	68.3
10	R 10	1800	13	68.3
11	R 10	1800	13	16.0
12	R 10	1800	16	82.8
13	R 10	1800	12	25.8
14	R 10	1800	13	9.1
15	R 10	1800	13	11.7
16	R 10	1800	13	110.0
17	R 10	1800	40	22.1
18	R 10	1800	26	49.0
19	R 10	1800	98	55.2
20	R 10	1800	46	55.2
21	R 10	1800	250	55.2

Pol	Profil	De lka [mm]	ks	R
1	R 12	4050	32	129.6
2	R 12	3450	12	41.4
3	R 12	2700	5	13.5
4	R 12	1800	25	46.8
5	R 12	1300	36	46.8
6	R 10	1850	43	79.5
7	R 10	1800	26	46.8
8	R 10	1800	25	7.5
9	R 10	1800	12	68.3
10	R 10	1800	13	68.3
11	R 10	1800	13	16.0
12	R 10	1800	16	82.8
13	R 10	1800	12	25.8
14	R 10	1800	13	9.1
15	R 10	1800	13	11.7
16	R 10	1800	13	110.0
17	R 10	1800	40	22.1
18	R 10	1800	26	49.0
19	R 10	1800	98	55.2
20	R 10	1800	46	55.2
21	R 10	1800	250	55.2

Pol	Profil	De lka [mm]	ks	R
1	R 12	4050	32	129.6
2	R 12	3450	12	41.4
3	R 12	2700	5	13.5
4	R 12	1800	25	46.8
5	R 12	1300	36	46.8
6	R 10	1850	43	79.5
7	R 10	1800	26	46.8
8	R 10	1800	25	7.5
9	R 10	1800	12	68.3
10	R 10	1800	13	68.3
11	R 10	1800	13	16.0
12	R 10	1800	16	82.8
13	R 10	1800	12	25.8
14	R 10	1800	13	9.1
15	R 10	1800	13	11.7
16	R 10	1800	13	110.0
17	R 10	1800	40	22.1
18	R 10	1800	26	49.0
19	R 10	1800	98	55.2
20	R 10	1800	46	55.2
21	R 10	1800	250	55.2

Pol	Profil	De lka [mm]	ks	R
1	R 12	4050	32	129.6
2	R 12	3450	12	41.4
3	R 12	2700	5	13.5
4	R 12	1800	25	46.8
5	R 12	1300	36	46.8
6	R 10	1850	43	79.5
7	R 10	1800	26	46.8
8	R 10	1800	25	7.5
9	R 10	1800	12	68.3
10	R 10	1800	13	68.3
11	R 10	1800	13	16.0
12	R 10	1800	16	82.8
13	R 10	1800	12	25.8
14	R 10	1800	13	9.1
15	R 10	1800	13	11.7
16	R 10	1800	13	110.0
17	R 10	1800	40	22.1
18	R 10	1800	26	49.0
19	R 10	1800	98	55.2
20	R 10	1800	46	55.2
21	R 10	1800	250	55.2

Pol	Profil	De lka [mm]	ks	R	
1	R 12	4050	32	6	12
2	R 12	3450	12	10	129.6
3	R 12	2700	5	10	11.4
4	R 12	1800	25	10	13.5
5	R 12	1300	36	10	46.8
6	R 10	1850	43	10	46.8
7	R 10	1800	26	10	79.5
8	R 10	1800	25	10	47.6
9	R 10	1800	12	10	57.6
10	R 10	1800	13	10	42.5
11	R 10	1800	13	10	68.3
12	R 10	1800	16	10	16.0
13	R 10	1800	13	10	82.8
14	R 10	1800	12	10	25.8
15	R 10	1800	13	10	9.1
16	R 10	1800	13	10	11.7
17	R 10	2750	40	10	110.0
18	R 10	1850	40	10	22.1
19	R 10	1800	58	10	22.1
20	R 12	1200	46	10	49.0
21	R 16	230	50	12.5	55.2
CELKOVÁ DELKA				12.5	
CELKOVÁ HMOTNOST [kg]				12.5	654.5
HMOTNOST [kg]				2.8	403.5
CELKOVÁ HMOTNOST [kg]				2.8	403.5
				702.2	959.0